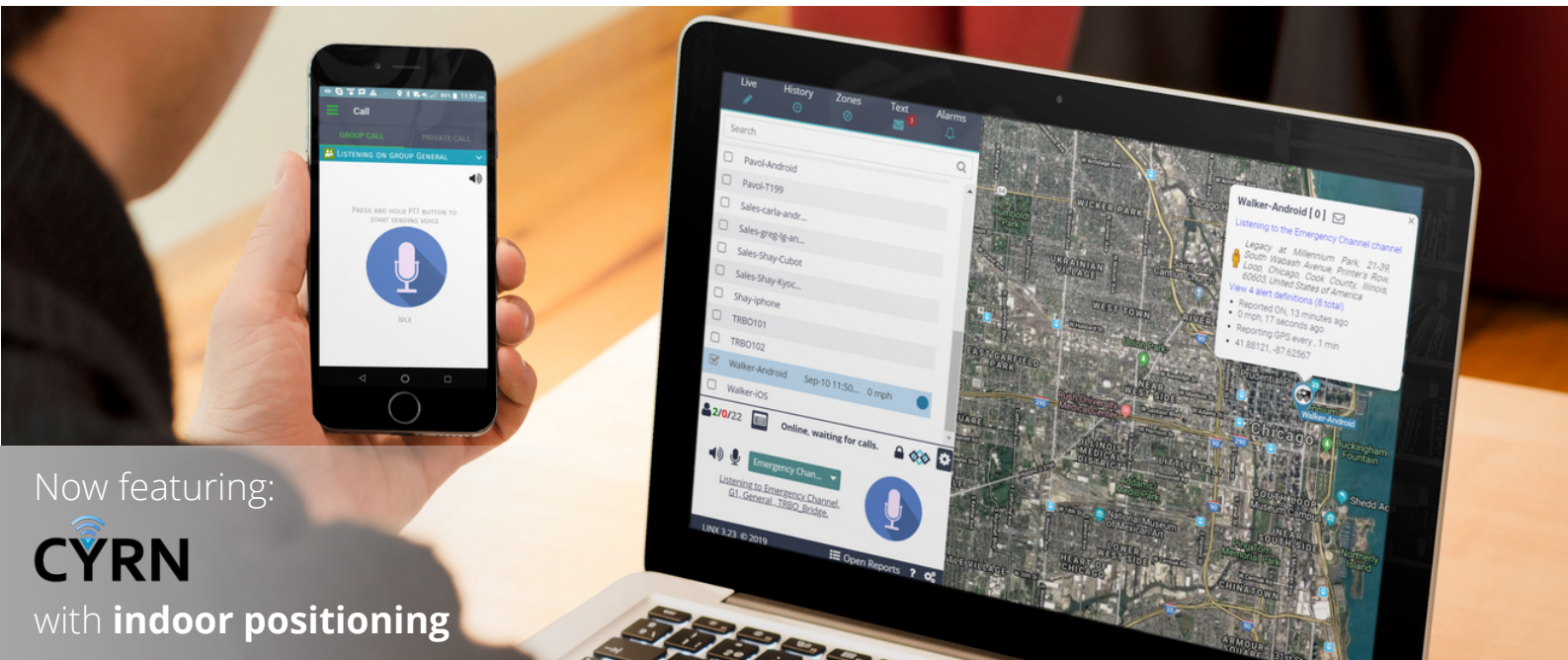




# LINX

PUSH FOR **MORE** THAN PUSH TO TALK



Now featuring:

**CYRN**

with **indoor positioning**

## FEATURES

- Instant Push-to-Talk (Group & Private Calls)
- PC PTT & VoIP Dispatch with call history & recordings
- Live Map/GPS tracking with breadcrumbs
- Speeding, geofence & landmark alerts
- Emergency alarms with panic button (Man Down, Lone Worker, SOS)
- Text Messaging/File Sharing
- Carrier agnostic (use any 3G, 4G LTE, Wi-Fi, private or hybrid data network connection)
- Ruggedized & specialty hardware
- PTT accessory compatibility
- Unlimited users & groups
- Subscription based cloud & private/on-premise solutions available
- Supports radio integration for hybrid LMR system

## MANAGED COMMUNICATION SOLUTIONS DESIGNED FOR MOBILE WORKFORCES

**LINX consolidates communication, tracking and safety technologies into one, easy to use solution.**

**Every business has unique needs.** For that reason, you can enable as many or few features as needed, and manage the units on the network over-the-air.

## BENEFITS

- Improve team collaboration & efficiency
- Reduce communication system costs
- Expand coverage beyond radio, link multiple locations
- Minimize incident response time
- Get up and running out of the box



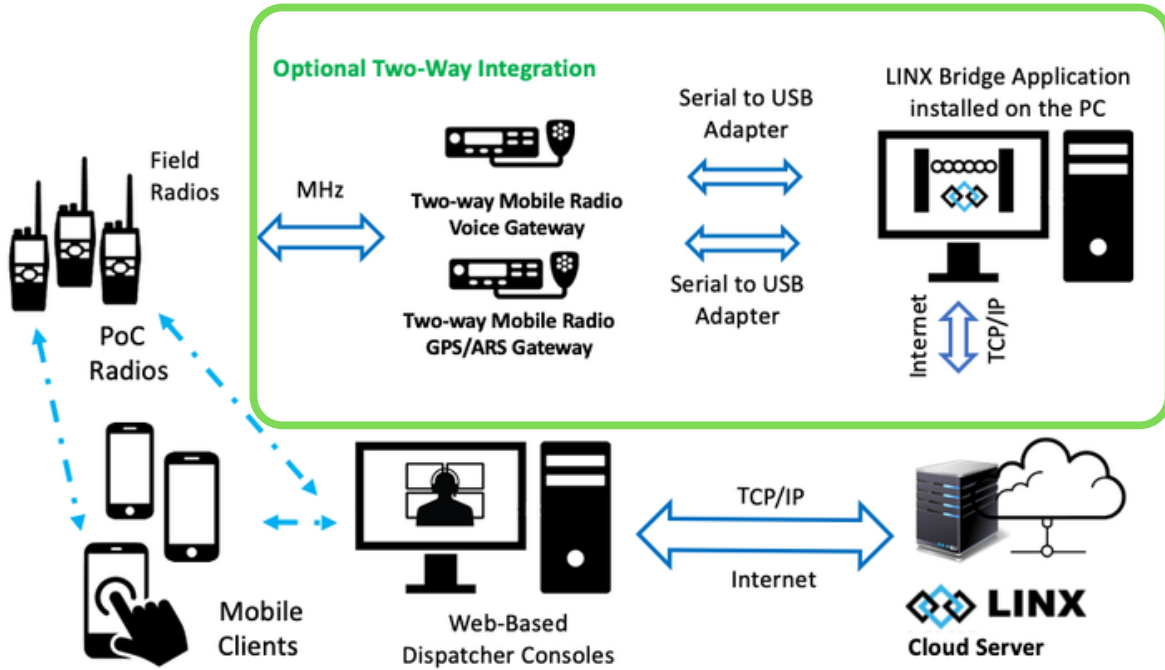
**Metropolitan Wireless International (MWI)**

421 Tagore Industrial Avenue, Tagore 8, #02-19 Upper Deck, Singapore 787805

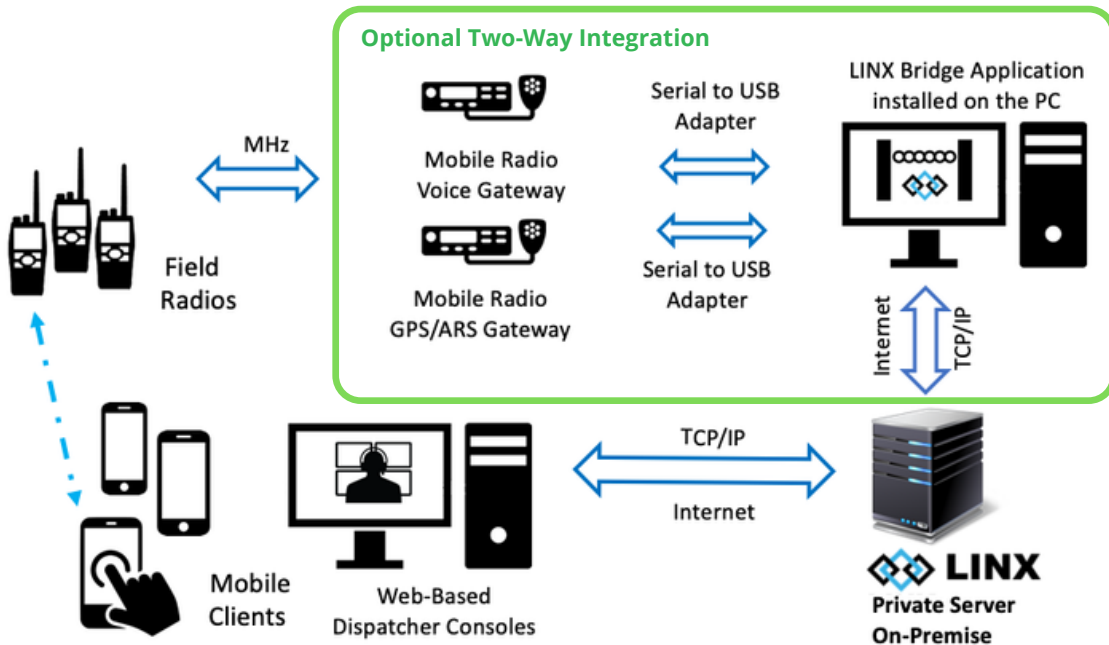
**Tel. +65 6265 8933 Email: [salesinfo@mw.com.sg](mailto:salesinfo@mw.com.sg)**

**[mw.com.sg](http://mw.com.sg)**

## LINX ON CLOUD



## LINX ON-PREMISE (PRIVATE SERVER)





# FEATURES & FUNCTIONS

## MOBILE



**Push-to-Talk** — Immediately reach contacts, groups or your entire team at once with the touch of a button for professional two-way communication.



**Record Calls** — Calls on the network are saved & stored similar to voicemail for future playback.



**Locate Your Team** — Team presence & GPS allows you to view where your group members are located in relation to yourself on a live map.



**Send Texts & Files** — Instant messaging & image/video file transfers keep you in touch when voice calls aren't convenient. Texts read aloud for hands-free situations.



**Worker Safety** — Built-in SOS buttons, Man Down/Lone Worker security features, & the CYRN wearable panic button for location based emergency alerts with indoor positioning. Positions are traced with BLE beacon connections.



**Real-Time Updates** — Command & controlled updates from central managing dashboard: enable/disable units, notify teams of changes, add members to groups, & activate features instantly.

## DISPATCH



**Push-to-Talk** — Group, private & broadcast calls with one touch from your dashboard. See asset's call status, device battery level, & listen to multiple group channels at once.



**Asset Tracking & GPS Dispatch** — Real-time GPS unit & personnel tracking on a live map with historical trails & playback. Monitor speeding & driver habits.



**Zones & Landmarks** — Provide oversight & alarms assigned to geographical areas & places of interest for your team's routes, job sites.



**Alerts, Alarms & Security**— Units in distress are displayed instantly on the dashboard with GPS coordinates & indoor locations to reduce response time.



**Live Global Coverage** — Link multiple locations, out-of-town offices, remote workers, international operations & global partners using one LINX network.

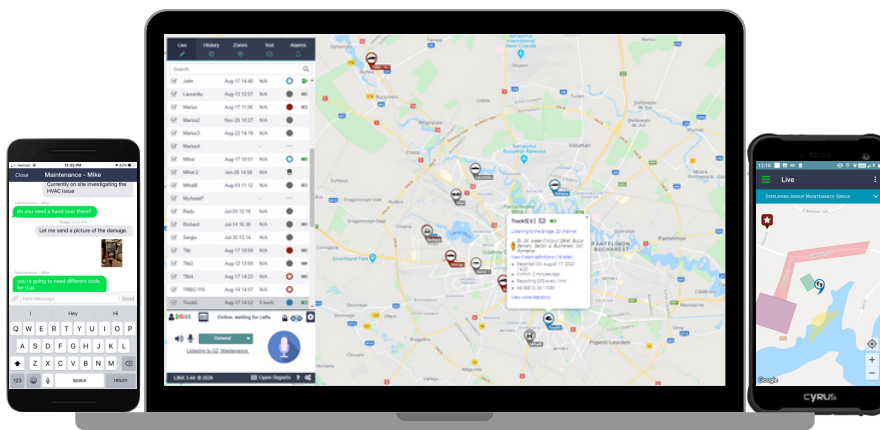


**Analytics & Reports** — Enhance your company's efficiency, response times, safety goals, & customer service by analyzing data from LINX system reports & improving on your daily operations.

WHETHER YOU NEED  
**POC RADIOS & ACCESSORIES**



OR ONLY **SMARTPHONES**  
(which also pair with PTT accessories)



OR **BOTH,**

**THE CHOICE IS YOURS.**

